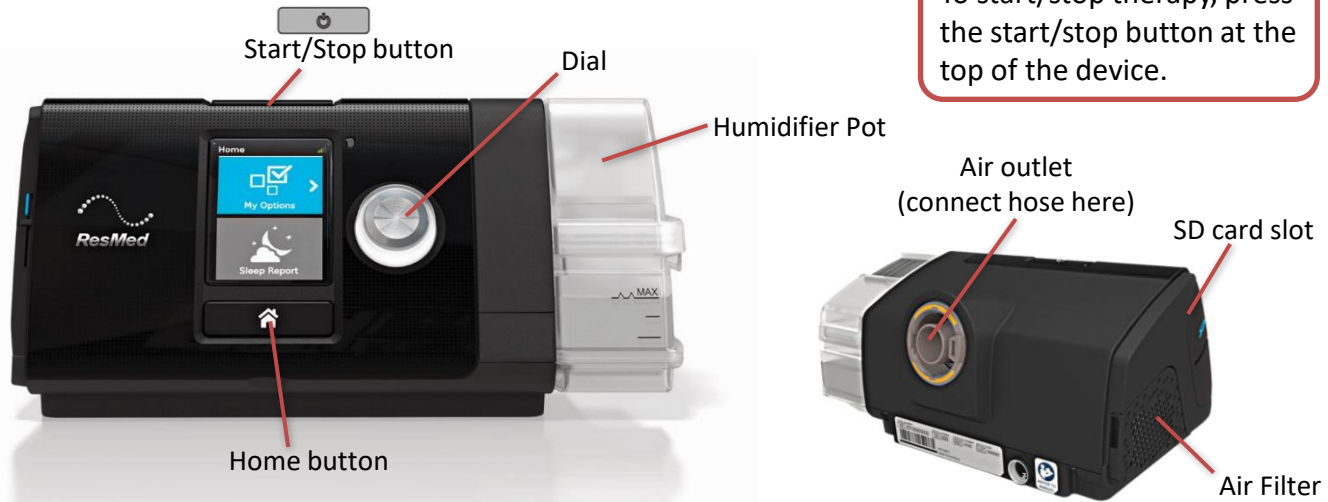



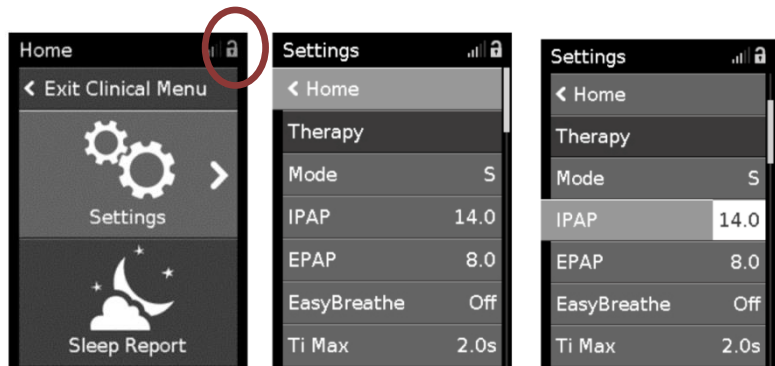
ResMed Aircurve 10 ST-A



To start/stop therapy, press the start/stop button at the top of the device.

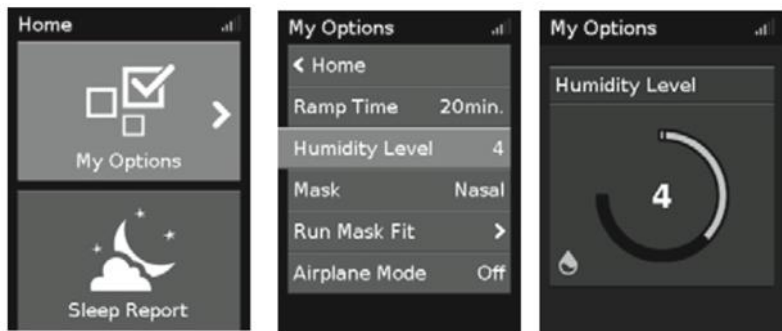
To view and make parameter changes

- Push and hold **both** the **dial** and **home** button at the same time for three seconds. The home screen will display an unlock icon  in the top right corner of the screen.
- Once unlocked, highlight Settings and press the dial. The settings menu is displayed.
- Turn the dial to highlight the parameter you want to adjust and select by pressing dial.
- Turn the dial to adjust setting and press the dial to save the change.
- Exit menu when you are done

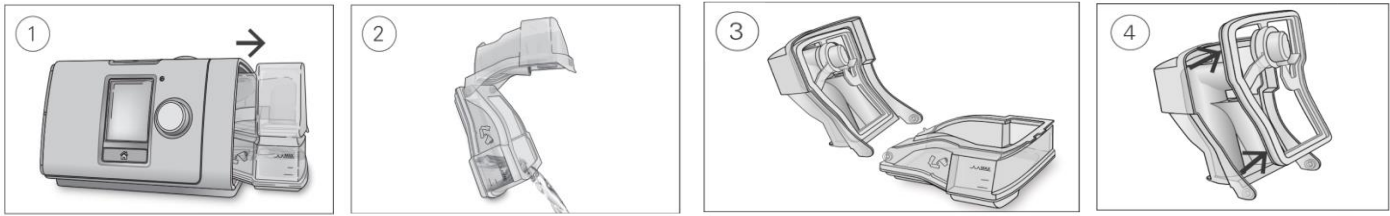


Humidity Setting

- You can set the humidity to off or between 1 and 8 (1 is the lowest humidity setting and 8 is the highest).
- In My Options, turn the dial to highlight Humidity Level and press the dial.
- Turn the dial to adjust the humidity setting to your desired level and press the dial to save the change.



Cleaning Humidifier Pot



1. Hold the humidifier pot at the top and bottom. Pull gently away from the device.
2. Open the humidifier lid and discard any remaining water.
3. Disassemble the lid from the base.
4. Disassemble the seal from the lid.

Wash the humidifier parts with warm water, using a soft cloth and mild detergent.
Do not wash in a dishwasher or washing machine.

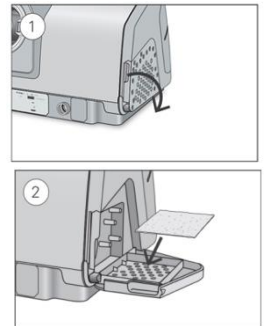
****Fill humidifier pot with distilled water****
****Clean humidifier pot, tubing, and mask weekly****

Air Filter

Check the air filter and **replace at least every six months**.
Replace it more often if there are any holes or blockages by dirt or dust.

1. Open the air filter cover and remove the old air filter.
2. The air filter is not washable or re-useable. Discard used filter.
3. Place a new filter and close the cover.

Make sure the filter is fitted at all times to prevent water and dust from entering the device.



Connecting the Power Cable

- Firmly push the power cable into the back of the unit.



- Confirm the power adapter cable is firmly pushed into adapter block.
- Connect plug directly into electrical outlet

