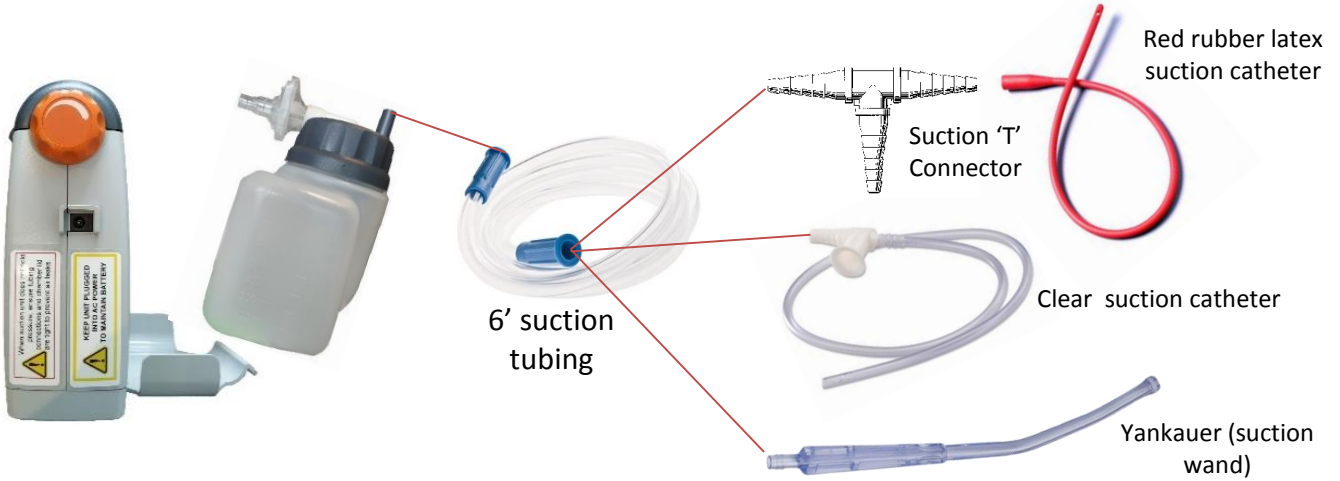
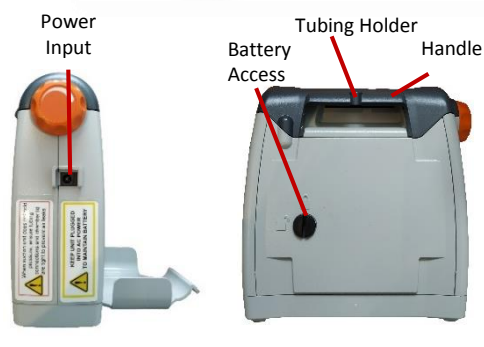
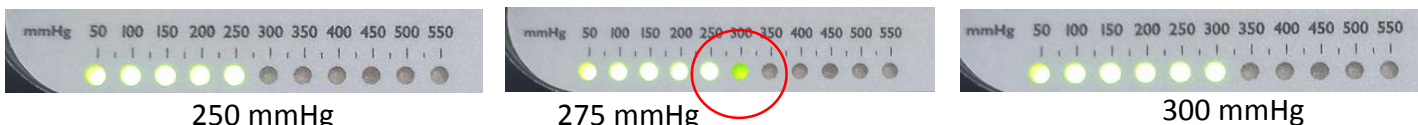
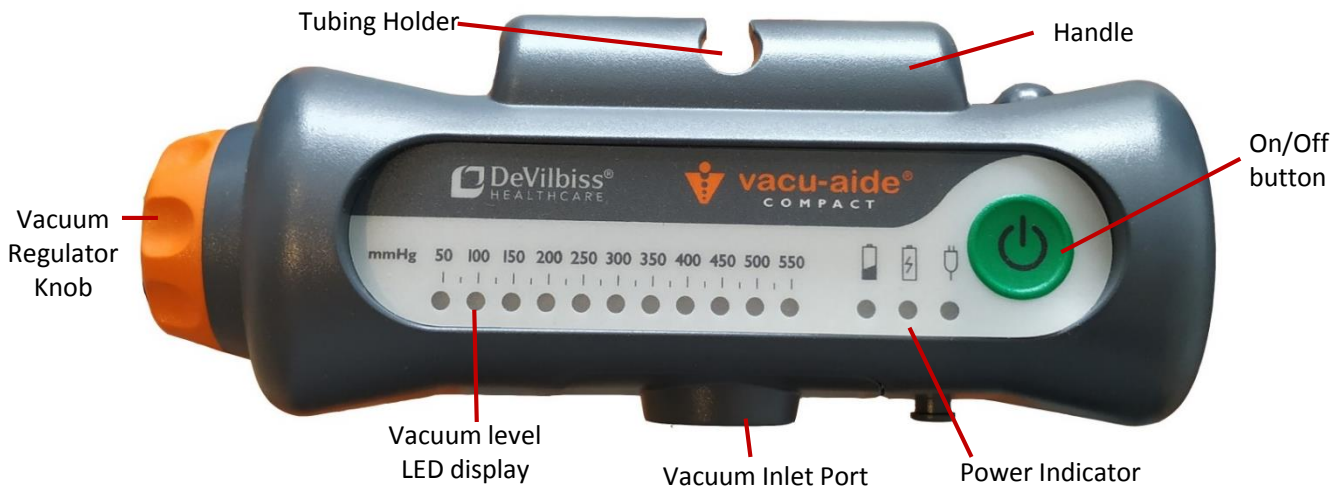


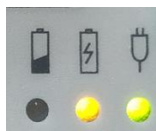
DeVilbiss Vacu-Aide Suction Unit

Container Assembly

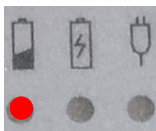




LED at half brightness indicates vacuum level is halfway between the previous fully lit LED and the half brightness LED



- Confirm the green external power light illuminates when AC or DC power source is connected
- A yellow LED will illuminate while the battery is charging. Light will go off when battery is fully charged
- A red LED will illuminate when battery is low.



- **Always** leave a suction unit plugged in when not in use
- A discharged battery will require **up to 5 hours** of charge to reach full capacity

Recommended Cleaning Schedule

Daily

- Empty collection container and rinse
- Flush yankauer and tubing with water after each use to keep tubing clear of mucus
- Ensure your suction unit is plugged in and charging

Weekly

- Clean collection container with hot soapy water. Rinse well.
- Suck hot soapy water through the yankauer (suction wand) and 6' suction tubing. Rinse well.

Monthly

- Inspect filter, replace as needed
- Inspect all components for cracks and wear and tear. Replace as needed.

To order suction supplies, please use the following PROP Identification numbers below:

ID#	Item description
803	Suction container assembly (container, lid with elbow, filter)
153	Filter
36	Yankauer (suction wand)
440	6' suction tubing
38	Suction 'T' connector
33	Red rubber latex suction catheters (14-16F)
695	Clear suction catheters (14F)

Alternate suction catheter sizes, and/or supplies not listed above can be inquired about by calling PROP directly